

General Information

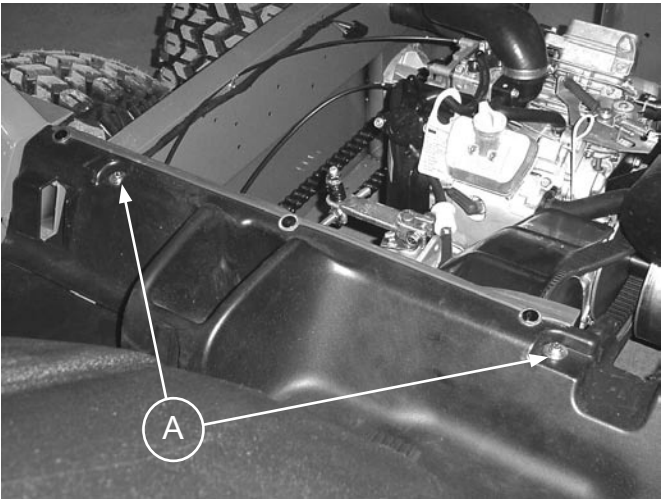
IMPORTANT: Read and understand all instructions before attempting to install this product.
Open and inspect package to check for lost or damaged parts.

Parking Safely

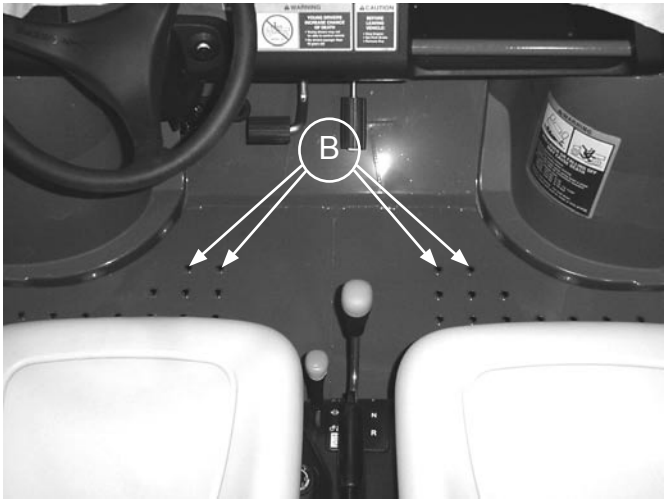
- 1. Stop vehicle on a level surface, not on a slope.
- 2. Lock park brake.
- 3. Stop engine.
- 4. Remove key.
- 5. Before you leave the operator's seat, wait for engine and all moving parts to stop.
- 6. Disconnect the negative battery cable or remove the spark plug wire (for gasoline engines) before servicing the machine.

Installation

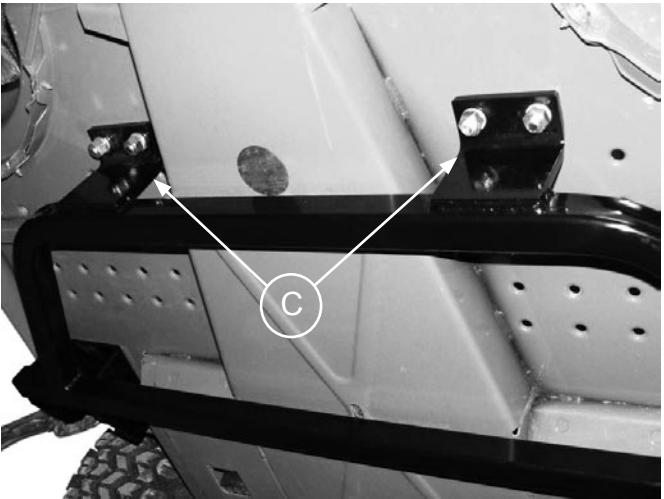
- 1. Make sure the passenger seat is mounted in it's inward most position. Slots are provided in the seat mount attached to the bottom of the seat.
- 2. Lift cargo bed and latch in the upright position .



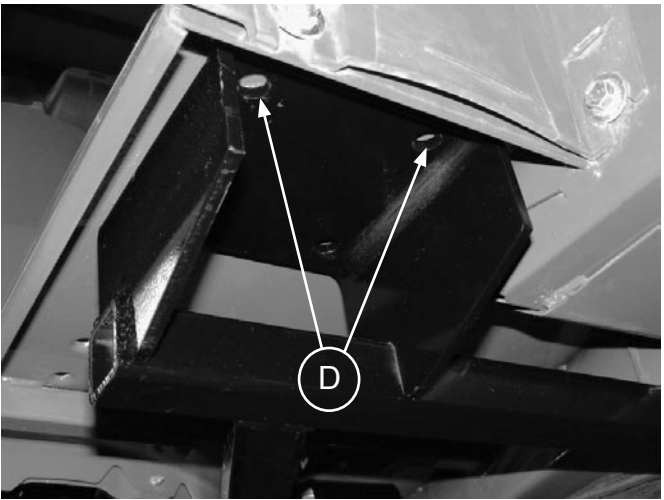
- 3. Remove bolts, washers and tinnerman nuts (A) securing the rear edge of the cover.



- 4. Using a 17/32" drill bit, drill out the forward four tread holes (B) in the vehicle floorboard.



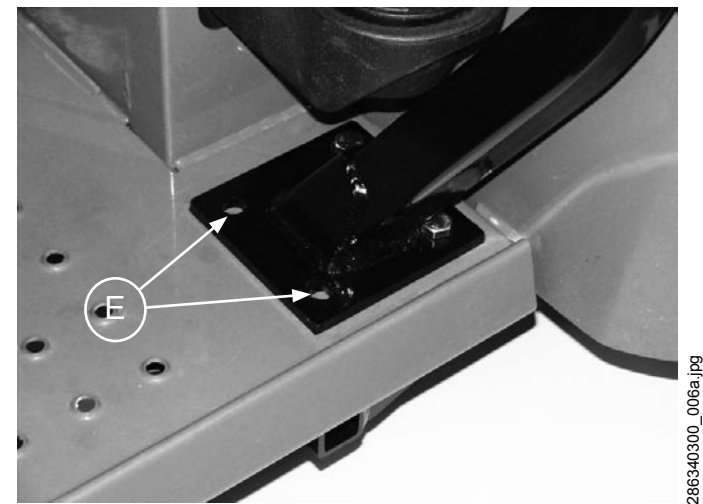
- 5. Place the ROPS subframe under the vehicle floorboard. Align the front brackets (C) with the holes drilled in Step #4. Secure with four 1/2 x 1 1/2 bolts and flat washers from the top and lock washers and nuts from the bottom.



- 6. Use clamps or a floor jack to hold the subframe against the underside of the floorboard. Use the rear brackets as a guide and transfer drill the two rearward holes (D) on each side up through the floorboard using a 17/32" drill bit.

All information, illustrations and specifications in this manual are based on the latest information available at the time of publication. The right is reserved to make changes at any time without notice.

7. Manuever the ROPS frame over the seats and into position on the vehicle floorboard, aligning it with the four previously drilled holes. Secure using four 1/2 x 1 1/2 bolts from the top and lock washers and nuts from the bottom.



286340300_006a.jpg

8. Use the mount plates of the ROPS frame as a guide and transfer drill the two forward holes (E) on each side down through the floorboard using a 17/32” drill bit. Secure using four 1/2 x 1 1/2 bolts from the top and lock washers and nuts from the bottom. Torque all bolts to 85 ft-lbs.



286340300_003a.jpg

9. Secure rear cross member brackets.
Standard Series: Install two 3/8 x 1 bolts, four flatwashers, two lock washers and two nuts.
Traditional Series: Place a 3/8 flat washer and spacer (As Shown) under each cross member bracket then secure using two 3/8 x 1 1/2 bolts, four flatwashers, two lock washers and two nuts.
(Note: Cross member brackets are not shown for clarity in placement of hardware.)



286340300_008a.jpg



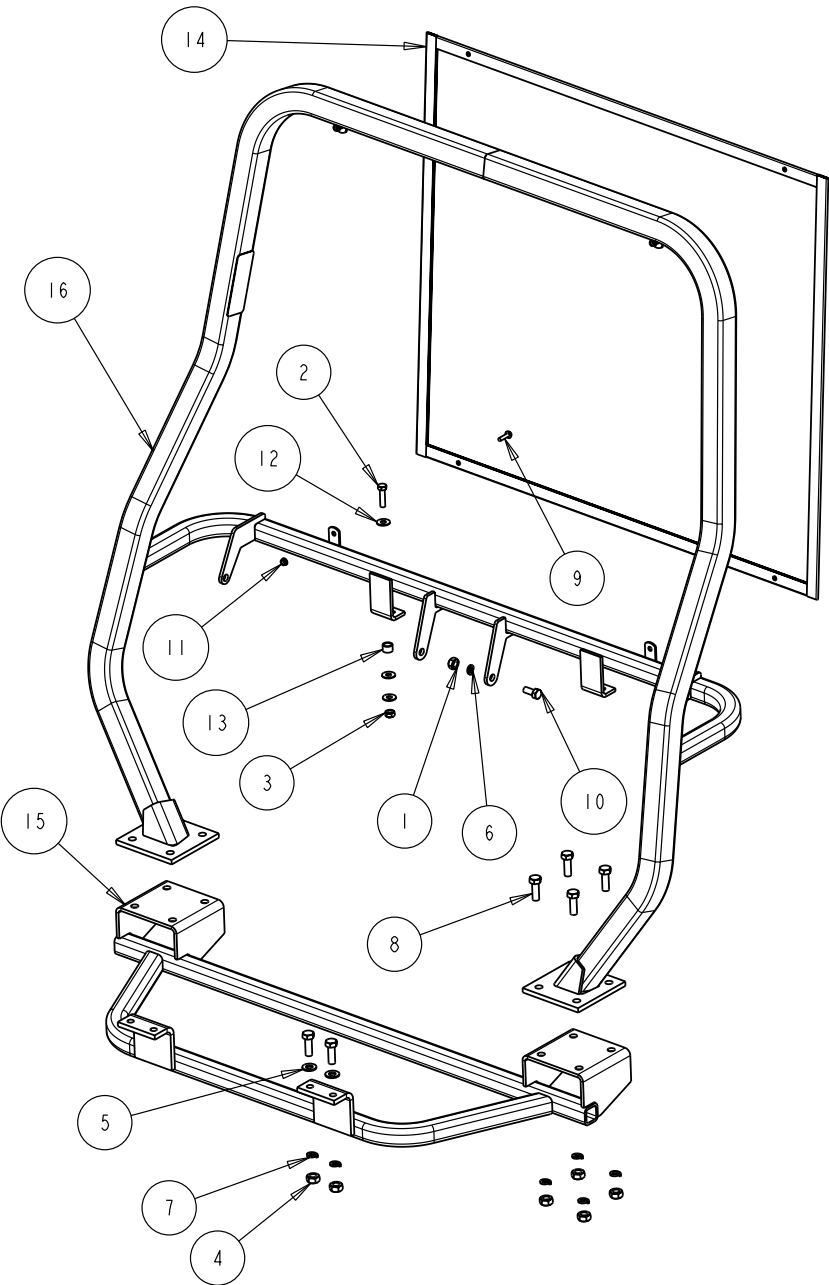
286340300_009a.jpg

10. Install rear cargo screen using four 1/4 x 1 bolts and nuts. The cargo screen is positioned in front of the lower tabs on the ROPS and behind the upper tabs.



286340300_007a.jpg

11. Install seat belts using four 7/16 x 1 bolts, lock washers and nuts. (Driver's side shown) Torque all bolts to 55 ft-lbs.



Item	Part Number	Description	Qty	Note
1	202072483	NUT HX 7/16-20	4	
2	202644883	BOLT HHCS 3/8-16 x 1.50 Gr5	2	
3	202710383	NUT HX 3/8-16	2	
4	202710483	NUT HX 1/2-13	12	
5	202720883	WASHER FLAT 1/2	4	
6	202721183	LOCK WASHER 7/16	4	
7	202721283	LOCK WASHER 1/2	12	
8	209011083	BOLT HHCS 1/2-13 x 1.50 Gr5	12	
9	292020783	BOLT HHSF 1/4-20 x 1.00 Gr2	4	
10	292036883	BOLT HHCS 7/16-20 x 1.00 Gr5	4	
11	292507983	NUT HXSF 1/4-20	4	
12	293001383	WASHER FLAT 3/8	6	
13	711696883	SPACER SEAT BELT	2	
14	720750900	SCREEN	1	
15	N/A	SUBFRAME	1	
16	N/A	FRAME	1	
17	230192701	SEAT BELT	2	Not Shown
18	286304500	LABEL ROPS WARNING	1	Not Shown